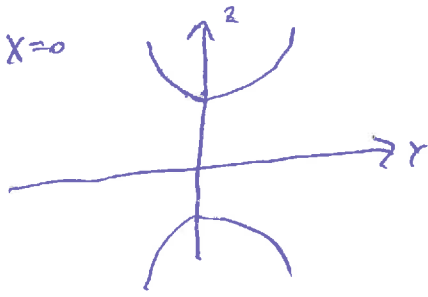


Pictures Exam 3 Math 241 1:15 class Fall 2017

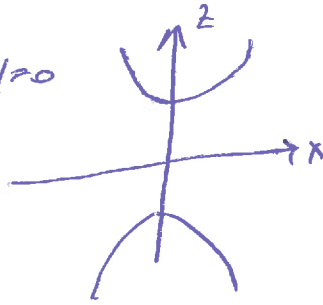
① $z^2 - x^2 - y^2 = 1$

when $x=0$



hyperbola

when $y=0$



hyperbola

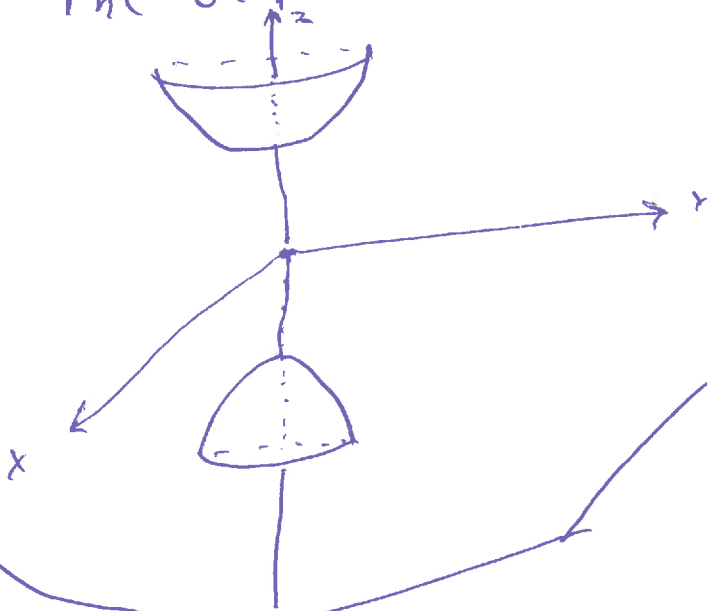
No graph for $-1 < z < 1$

If $z=1$, get one point

If $z=-1$, get one point

If z is a constant with $z < -1$ or $z > 1$ Get a circle

The surface is a hyperboloid of two sheets



②

