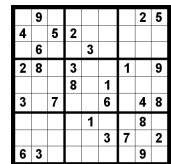




# *Pi Mu Epsilon*

& GAMECOCK MATH CLUB



7<sup>th</sup> Annual

## Sudoku Extravaganza

Tuesday 4<sup>th</sup> February 2014

LeConte 412

*6:00 pm – Student Seminar*

Sudoku and Graph Theory: Critical Sets

Prof. Josh Cooper

USC Department of Mathematics

*7:00 pm – Sudoku Championship*

Prizes for the Overall Winners

Door Prizes and Snacks, too

Event supported in part by  
Residence Hall Association



For more info visit PME/GMC on FaceBook and at <http://www.math.sc.edu/~pme/>.